



## ROUND COUPLER NUTS



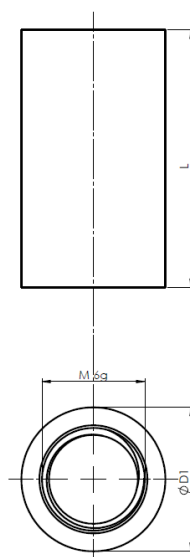
DATASHEET  
WS 9290

# WS 9290

## TECHNICAL SPECIFICATIONS

<b>Material</b>	Stainless steel
<b>Quality</b>	A2 / A4
<b>Surface</b>	Blank
<b>Product class</b>	A

## DIMENSIONS (MM)



thread	D1	L						
		20	25	30	35	40	45	50
<b>M6</b>	Ø10	x	x	x				
<b>M8</b>	Ø11	x	x	x	x	x	x	x
<b>M10</b>	Ø13		x	x	x	x	x	x
<b>M12</b>	Ø15				x	x	x	x
<b>M16</b>	Ø24					x	x	x
<b>M20</b>	Ø28							x

WE'LL BE PLEASED TO ADVISE FOR YOUR AP-  
PLICATION.

T +49(0)202 / 26 32-0  
info@wasi.de  
www.wasi.de

