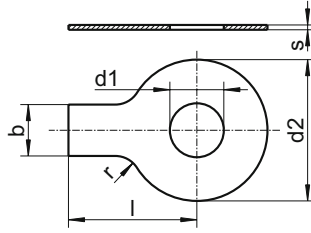


DIN 93

Tab washers

with long tab



d1	for	d2	s	l	r	b
4,3	M4	14	0,38	14	2,5	5
5,3	M5	17	0,50	16	2,5	6
6,4	M6	19	0,50	18	4,0	7
8,4	M8	22	0,75	20	4,0	8
10,5	M10	26	0,75	22	6,0	10
13,0	M12	30	1,00	28	10,0	12
15,0	M14	33	1,00	28	10,0	12
17,0	M16	36	1,00	32	10,0	15
19,0	M18	40	1,00	36	10,0	18
21,0	M20	42	1,00	36	10,0	18
23,0	M22	50	1,00	42	10,0	20
25,0	M24	50	1,00	42	10,0	20
28,0	M27	58	1,60	48	16,0	23
31,0	M30	63	1,60	52	16,0	26
34,0	M33	68	1,60	56	16,0	28
37,0	M36	75	1,60	60	16,0	30

Grade	SU
▲●	200
▲●	200
▲●	200
▲●	100
▲●	100
▲●	100
▲●	100
▲●	100
▲●	100
▲●	50
▲●	50
▲●	50
▲●	50
▲●	50
▲●	20
▲●	20

■ A1 / ▲ A2 / ● A4 | SU: Sales unit | All measurements in mm | Other dimensions on request.
 Example item no. 93-2-8,4 DIN 93 - A2 - Ø 8,4mm