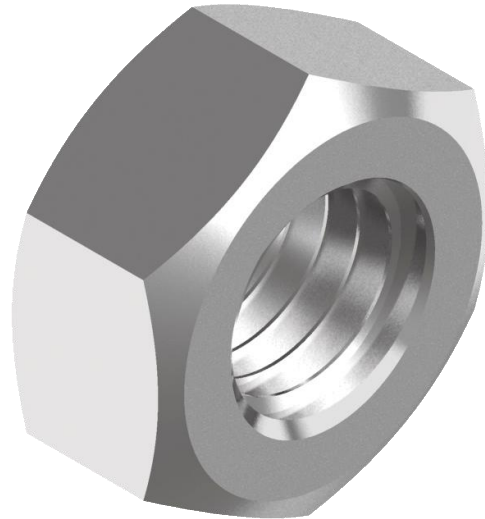




HEXAGON NUTS



DATASHEET DIN 934 u. ISO 4032

DIN 934 u. ISO 4032

TECHNICAL SPECIFICATIONS

Stainless steel nuts are available in different material grades (e.g. A2 / A4 / Duplex etc.) and strengths (e.g. 50 / 70 / 80).

You will also find nuts for special applications in our range (e.g. according to AD-2000-W7-2).

Material	Stainless steel *
Quality	various
Strength	50 / 70 / 80
Surface	Blank
Product class	≤ M16: A / > M16: B
Thread tolerance	6H
Thread	metric right / left

* other materials on request

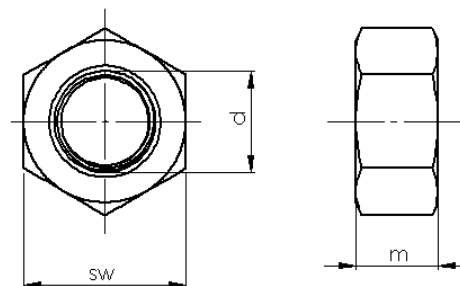
WE'LL BE PLEASED TO ADVISE FOR YOUR AP-
PLICATION.

T +49(0)202 / 26 32-0
info@wasi.de
www.wasi.de



DIMENSIONS (MM)

Nom. dimension			m	
	p	sw	min.	max. = nom. dimension
M1,4	0,3	3	0,95	1,2
M1,6	0,35	3,2	1,05	1,3
M2	0,4	4	1,35	1,6
M2,5	0,45	5	1,75	2
M3	0,5	5,5	2,15	2,4
M3,5	0,6	6	2,55	2,8
M4	0,7	7	2,9	3,2
M5	0,8	8	3,7 / 4,4**	4 / 4,7**
M6	1	10	4,7 / 4,9**	5 / 5,2**
M7	1	11	5,2	5,5
M8	1,25	13	6,14 / 6,44**	6,5 / 6,8**
M10	1,5 / 1* / 1,25*	17 / 16**	7,64 / 8,04**	8 / 8,4**
M12	1,75 / 1,25* / 1,5*	19 / 18**	9,64 / 10,37**	10 / 10,8**
M14	2 / 1,5*	22 / 21**	10,3 / 12,1**	11 / 12,8**
M16	2 / 1,5*	24	12,3 / 14,1**	13 / 14,8**
M18	2,5 / 1,5* / 2*	27	14,3 / 15,1**	15 / 15,8**
M20	2,5 / 1,5* / 2*	30	14,9 / 16,9**	16 / 18**
M22	2,5 / 1,5* / 2*	32 / 34**	16,9 / 18,1**	18 / 19,4**
M24	3 / 2*	36	17,7 / 20,2**	19 / 21,5**
M27	3 / 2*	41	20,7 / 22,5**	22 / 23,8**
M30	3,5 / 2*	46	22,7 / 24,3**	24 / 25,6**
M33	3,5 / 2*	50	24,7 / 27,4**	26 / 28,7**
M36	4 / 3*	55	27,4 / 29,4**	29 / 31**
M39	4 / 3*	60	29,4 / 31,8**	31 / 33,4**
M42	4,5 / 3*	65	32,4	34
M45	4,5 / 3*	70	34,4	36
M48	5 / 3*	75	36,1 / 36,4**	38 / 38**
M52	5 / 3*	80	40,4	42
M56	5,5 / 4*	85	43,4	45
M60	5,5 / 4*	90	46,4	48
M64	6 / 4*	95	49,1	51
M68	6 / 4*	100	52,1	54
M72	4* / 6*	105	56,1	58
M80	4* / 6*	115	62,1	64



* *Italic dimensions "p" = fine thread*

** *Italic dimensions "sw" = ISO 4032*

** *Italic dimensions "m" = ISO 4032*

WE'LL BE PLEASED TO ADVISE FOR YOUR APPLICATION.

T +49(0)202 / 26 32-0
 info@wasi.de
 www.wasi.de

